









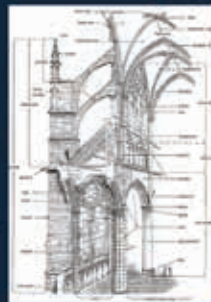


## Interior

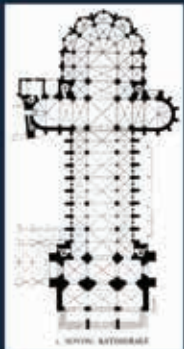
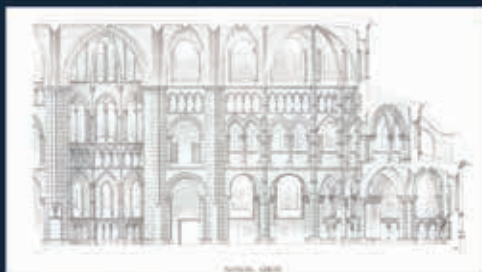
- Romanesque, Early Gothic
- Barrel Vaults
- East side has double aisles
- Transepts have gallery to Clerestorey stained glass windows

## Real World Inspirations

- Noyon Cathedral, France
- Sens Cathedral, France
- Laon Cathedral, France
- Canterbury Cathedral, England
- Cathedral of Our Lady Chartres, France
- St. Vitus Cathedral, Czechia



Canterbury Cathedral Plan, from B. Steen and G. van Rossum, *The Middle Ages and the Renaissance*, Stuttgart, 1981-1982








## The Holy Spiral

*The Fibonacci Sequence and symbol for balance and peace in Faegyn. Typically depicted with the cycles of the two moons between the seven radial spokes.*

## Lunarism

*The main religion of Faegyn and original motif inspiration for The Citadel. Lunarism is the belief in two moon goddesses that created a powerful and magic world tree that created all life in Faegyn. The two moon goddesses are often depicted as a crescent moon which represents the smaller moon eclipsing the larger as they often do at the peak of each season.*



## The Order of Armistice

*An order of assassins that have taken residency in The Citadel for the last 150 years. The Order's members come from all walks of life and vow to protect those who cannot protect themselves throughout Faegyn. The Symbol is typically depicted as the Holy Spiral with an arc following the seven radial spokes.*

## The World Tree

*A powerful and eternal willow tree with Gold leaves and sap. The World Tree created all life in Faegyn. In imagery it is depicted as a willow tree with the branches and leaves curving along the Fibonacci arc.*









*Diffuse*



*Normal*



*Roughness*



*Metallic*



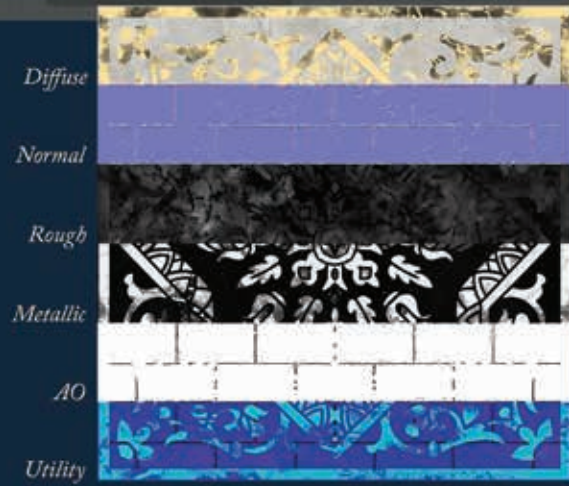
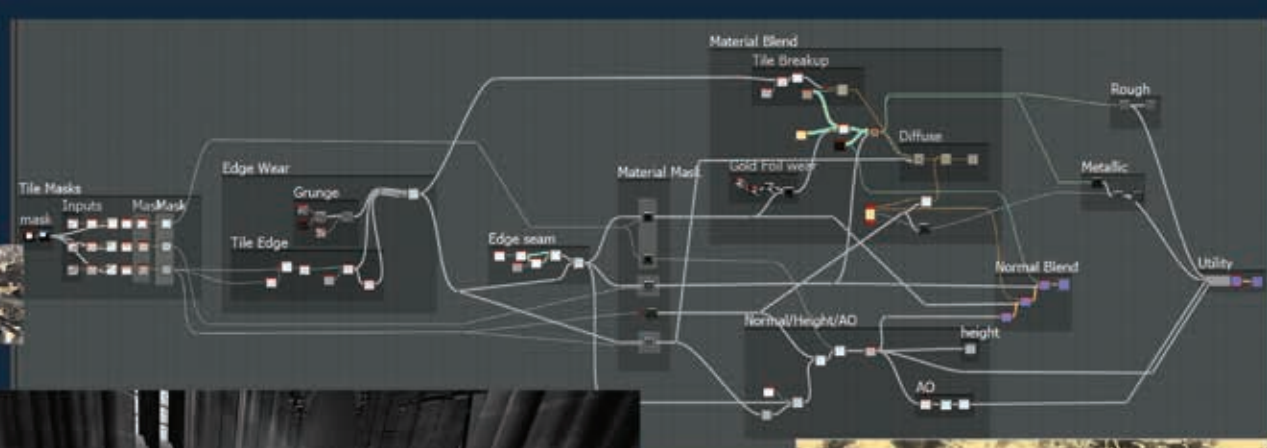
*Utility*

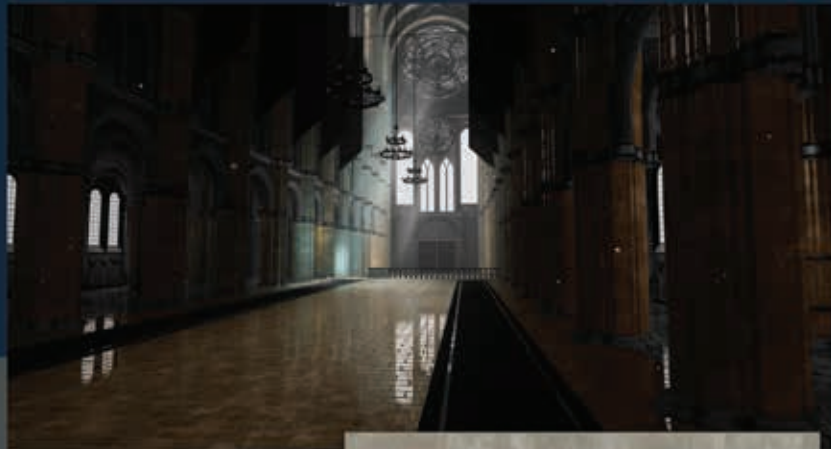
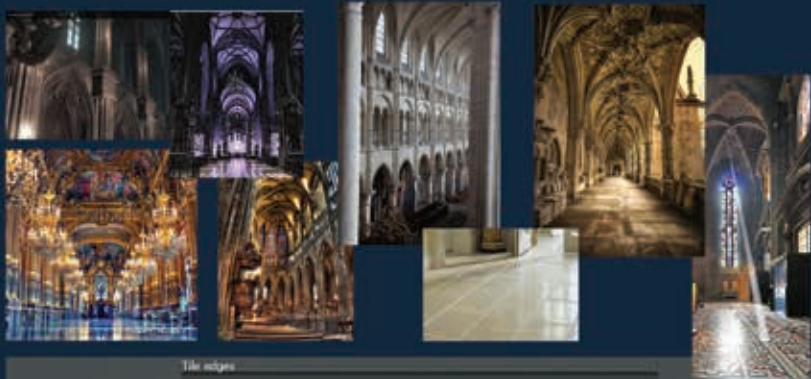


*Emissive*

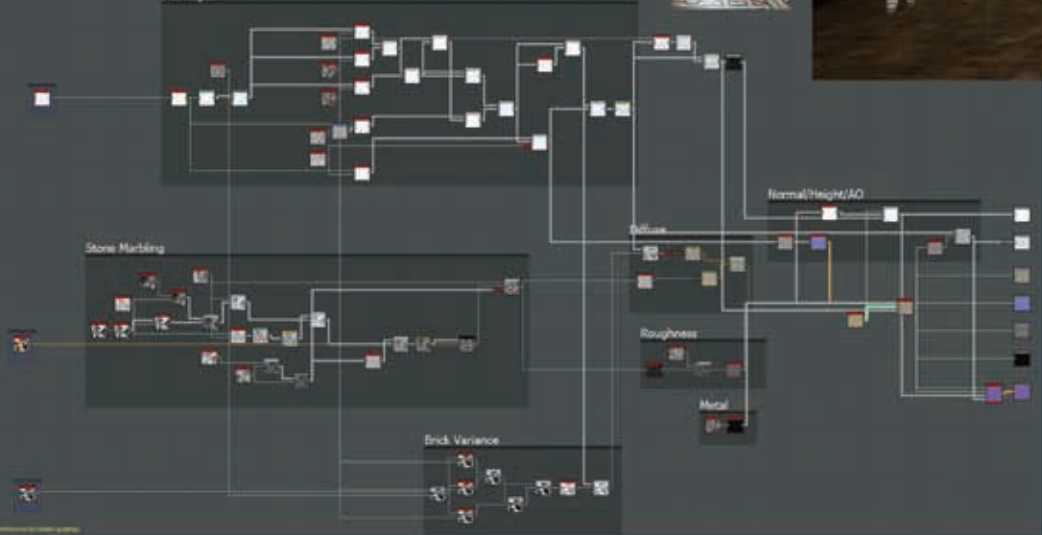








Tile edges



*Diffuse*

*Normal*

*Rough*

*Metallic*

*AO*

*Utility*















ASH KUEHN

*ENVIRONMENT & MATERIAL ARTIST*

734.812.3034

ASHTON.KUEHN@GMAIL.COM

ASHKUEHN.COM